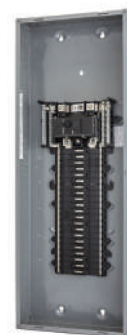


Indoor, QO Convertible Mains (100–225 A), 1Ø — Main Circuit Breaker



QO124M100P



QO142M200P

Table 7 - Plug-on Neutral Load Center Main Breaker, Convertible Mains (1Ø3W–120/240 Vac Indoor—UL Listed)

Mains Rating	Spaces	Max. Single Pole Circuits	Max. Tandem Circuit Breakers	Load Center box and Interior	Load Center Covers (Order Separately)		Al	Cu	Equipment Ground Bar Kit (Factory-Included)	Box No. ¹⁰
					Flush/Surface	Mono-Flat				
Convertible Mains — Factory-installed Main Lugs — 22 kA Short Circuit Current Rating										
Convertible to Main Lugs or Lower Amperage Main Circuit Breaker										
100 A	12	24	12	QO112M100P	QOC12UF, QOC12US	—	6–2/0	6–1	PK9GTA	5
	16		8	QO116M100P	QOC20U100F ¹¹ , QOC200U100S	—				6
	20		4	QO120M100P	QOC20U100F ¹¹ , QOC200U100S	—				
	24	34	10	QO124M100P	QOC24UF ¹¹ , QOC24US	—	6–2/0	PK15GTA	7	
	32	38	6	QO132M100P	QOC32UF ¹¹	—			8	
125 A	24	34	10	QO124M125P	QOC24UF ¹¹ , QOC24US	—			PK15GTA	7
	32	38	6	QO132M125P	QOC32UF ¹¹	—				8
Convertible Mains — Factory-Installed Main Lugs — 22 kA Short Circuit Current Rating										
Convertible to Main Lugs (see below) or Lower Amperage Main Circuit Breaker										
QOM2 Main Circuit Breaker Frame Size — Copper Bus										
150 A	20	30	10	QO120M150P	QOC30UF ¹¹ , QOC30US	QOCMF30UC ¹¹	4–300	4–250	PK15GTA	9
	24	36	12	QO124M150P	QOC30UF ¹¹ , QOC30US					
	30	40	10	QO130M150P	QOC30UF ¹¹ , QOC30US					
	32	40	8	QO132M150P	QOC40UF ¹¹ , QOC40US	—			PK18GTA	10

10. See QO/Homeline Enclosure Dimensions and Knockout Information, page 67.

11. Available in gray and white colors. For white equivalencies add the “W” suffix to the reference or see QO Load Center Covers, page 43.

Table 7 - Plug-on Neutral Load Center Main Breaker, Convertible Mains(1Ø3W–120/240 Vac Indoor—UL Listed) (Continued)

Mains Rating	Spaces	Max. Single Pole Circuits	Max. Tandem Circuit Breakers	Load Center box and Interior	Load Center Covers (Order Separately)		Al	Cu	Equipment Ground Bar Kit (Factory-Included)	Box No. ¹²
					Flush/Surface	Mono-Flat				
200 A	20	30	10	QO120M200P	QOC30UF ¹³ , QOC30US	QOCMF30UC ¹³	4–300	4–250	PK15GTA	9
	24	36	12	QO124M200P	QOC30UF ¹³ , QOC30US					
	30	40	10	QO130M200P	QOC30UF ¹³ , QOC30US					
	40	60	20	QO140M200P	QOC40UF ¹³ , QOC40US	—	4–300	4–300	PK23GTA	10
	42	52	10	QO142M200P	QOC42UF ¹³ , QOC42US	QOCMF42UC ¹³				11
	54	72	18	QO154M200P	QOC54UF ¹³	QOCMF54UC ¹³				12
		60	72	12	QO160M200PC ¹⁴	QOC60UF/S Included	—	4–300	PK27GTA	24
225 A	40	60	20	QO140M225P	QOC42UF ¹³ , QOC42US	QOCMF42UC ¹³	4–300	PK23GTA	11	
	42	52	10	QO142M225P						

NOTE: 22 k AIR main circuit breaker UL Listed for use ahead of QO, QOT (20 A MAX. NON-CTL) and QO-PL 10 k AIR branch circuit breakers to permit their application on systems with up to 22 kA available fault current.

12. See QO/Homeline Enclosure Dimensions and Knockout Information, page 67.

13. Available in gray and white colors. For white equivalencies add the “W” suffix to the reference or see QO Load Center Covers, page 43.

14. For Certification to IEC 60439–1 contact the local Square D sales office; otherwise panels are NOT CE marked. (For use on 415Y/240 Vac 3-phase 4-wire, 3,000 Short Circuit Current when QOXD... branch circuit breakers are used and 10,000 Short Circuit Current Rating when QO... VS branch circuit breakers are used).

Indoor, QO Convertible Mains (125–225 A) with Included Cover 1Ø



Table 9 - QO Load Centers with Included Cover (1Ø3W–120/240 Vac Indoor—UL Listed)

Mains Rating	Short Circuit Current Rating	Spaces	Max. Single Pole Circuits ¹⁷	Max. Tandem Circuit Breakers	Load Center Box, Interior, and Cover	Al	Cu	Equipment Ground Bar Kit (Order Separately)	Box No.
125 A	65 kA	12	24	12	QO112L125PGC	6–2/0		PKGTALP1 Included	6
		20		4	QO120L125PGC				7
		24	34	10	QO124L125PGC				
Convertible Mains — Factory-Installed Main Lugs¹⁸									
200 A	65 kA	30	40	10	QO130L200PGC	4–300		PKGTALP1 Included	9
225 A		42	52	10	QO142L225PGC				11
		54	72	18	QO154L225PGC			12	
Convertible Mains — Factory-Installed Main Circuit Breaker — QOM1 Main Frame Size — Convertible to Main Lugs¹⁹									
100 A	22 kA	12	24	12	QO112M100PC	6–2/0	6–1	PK9GTA	5
		16		8	QO116M100PC			6	
		20		4	QO120M100PC				
		24	34	10	QO124M100PC	6–2/0	PK15GTA, LK100AN	7	
Convertible Mains — Factory-Installed Main Circuit Breaker — QOM2 Main Frame Size — 10 Convertible to Main Lug¹⁹									
150 A	22 kA	30	40	10	QO130M150PC	4–300	4–250	PK18GTA, LK100AN, PK23GTA, LK100AN	9
		42	52		QO142M150PC	4–300		PK18GTA, LK100AN	11
200 A	22 kA	30	40	10	QO130M200PC	4–300	4–250	PK23GTA	9
		40	60	20	QO140M200PC				10
		42	52	10	QO142M200PC	4–300	PK23GTA, LK100AN	11	
		54	72	18	QO154M200PC			12	

17. Maximum single pole branch circuits utilizing QO and/or QOT (20 A MAX. NON-CTL) circuit breakers.
 18. UL Listed 5000 A short circuit current rating for corner grounded Delta systems (Use QO-H circuit breakers only).
 19. 22 k AIR main circuit breaker UL Listed for use ahead of QO, QOT and QO-PL 10 k AIR branch circuit breakers to permit their application on systems with up to 22 kA available fault current.

Rainproof, QO Convertible Mains (100–225 A), 1Ø — Main Lugs and Main Breaker

Table 10 - Plug-on Neutral Load Center Main Lugs, Convertible Mains (1Ø3W–120/240 Vac Rainproof — UL Listed)

Mains Rating	Spaces	Max. Single Pole Circuits ²⁰	Max. Tandem Circuit Breakers	Load Center box and Interior	Al	Cu	Equipment Ground Bar Kit (Factory-Included)	Box No. ²¹
Convertible Mains — Factory-Installed Main Lugs — 65 kA Short Circuit Current Rating ^{22, 23, 24} QOM1 Main Circuit Breaker Frame Size, Convertible to Main Circuit Breaker — Equipment Ground Bar Included								
125 A	12	24	12	QO112L125PGRB	6–2/0		PKGTALP1	3R
	16		8	QO116L125PGRB				4R
	24	34	10	QO124L125PGRB				
Convertible Mains — Factory-Installed Main Lugs — 65 kA Short Circuit Current Rating ^{23, 24} QOM2 Main Circuit Breaker Frame Size, Convertible to Main Circuit Breaker — Equipment Ground Bar Included								
200 A	12	24	12	QO112L200PGRB	4–300	4–250	PKGTALP1	5R
	30	40	10	QO130L200PGRB				6R
	40	60	20	QO140L200PGRB			PKGTAL2	7R
225 A	42	52	10	QO142L225PGRB	4–300		PKGTALP2	8R

Table 11 - Plug-on Neutral Load Center Main Breaker, Convertible Mains (1Ø3W–120/240 Vac Rainproof — UL Listed)

Mains Rating	Spaces	Max. Single Pole Circuits	Max. Tandem Circuit Breakers	Load Center Box and Interior	Al	Cu	Equipment Ground Bar Kit (Order Separately)	Box No. ²¹	
Convertible Mains — Factory-Installed Main Lugs — 22 kA Short Circuit Current Rating Convertible to Main Lugs ²⁵ QOM1 Main Circuit Breaker Frame Size — Copper Bus									
100 A	12	24	12	QO112M100PRB	6–2/0		PK9GTA	3R	
	16		8	QO116M100PRB				4R	
	20		4	QO120M100PRB					
	24	34	10	QO124M100PRB			PK15GTA	4R	
125 A	24	34	10	QO124M125PRB					
Convertible Mains — Factory-Installed Main Lugs — 22 kA Short Circuit Rating Convertible to Main Lugs ²⁶ QOM2 Main Circuit Breaker Frame Size — Copper Bus									
150 A	20	30	10	QO120M150PRB	4–300	4–250	PK15GTA	5R	
	30	40		QO130M150PRB				6R	
200 A	20	30	10	QO120M200PRB					
	30	40		QO130M200PRB			6R		
	40	60	20	QO140M200PRB	PK23GTA	7R			
225 A	42	52	10	QO142M200PRB	4–300		PK18GTA	8R	
	42	52	10	QO142M225PRB	4–300				

20. Maximum single pole branch circuits utilizing QO and/or QOT circuit breakers.
 21. See QO/Homeline Enclosure Dimensions and Knockout Information, page 67.
 22. UL Listed 5000 A short circuit current rating for corner grounded Delta systems. Use QO-H circuit breakers only.
 23. UL short circuit current rating depends on lowest interrupting rating of circuit breaker installed.
 24. Side hinge door device; allow 1–1/4 in. on left side for door to open.
 25. 22 k AIR main circuit breaker UL Listed for use ahead of QO, QOT, QO-GFI, QO-AFI, QO-EPD and QOPL 10 k AIR branch circuit breakers to permit their application on systems up to 22 kA.
 26. 22 k AIR main circuit breaker UL Listed for use ahead of QO, QOT, QO-GFI, QO-AFI, QO-EPD and QOPL 10k AIR branch circuit breakers to permit their application on systems up to 22 kA.

Backup Power Solutions, (30–200 A), 1Ø



Table 12 - Backup Power Solutions (1Ø3W–120/240 Vac Backup Power — UL Listed)

Mains Rating	Spaces	Max. Single Pole Circuits ²⁷	Max. Tandem Circuit Breakers	Load Center Box and Interior	Equipment Ground Bar Kit (Order Separately)	Al	Cu	Box No. ²⁸
Generator Panels — Manual Transfer for Sub-Feed Applications NEMA 1 (Indoor) Factory-Installed Main Circuit Breakers with Mechanical Interlock — 10 kA Short Circuit Current Rating								
30 A	4	8	4	QO48M30DSGP	PK7GTA	8–1		4
60 A				QO48M60DSGP				
Generator Panels — Manual Transfer with Generator Power Inlet Plug for Sub-Feed Application NEMA 3R (Outdoor) Factory-Installed Main Circuit Breakers with Mechanical Interlock — 10 kA Short Circuit Current Rating								
100 A	4	8	4	QO1DM10020TRBR	Factory-Installed	—	8–2	17R
				QO1DM10030TRBR		—		
				QO1DM10050TRBR		—		

QO Riser Panels (125–200 A), 1Ø

Table 13 - QO Riser Panels (1Ø3W–120/240 Vac Special Applications — UL Listed)

Mains Rating	Spaces	Max. 1P Circuits ²⁹	Max. Tandem Circuit Breakers	Load Center Box and Interior	Indoor Cover		Equipment Ground Bar Kit (Order Separately)	Main Wire Size AWG/kcmil		Box No. ²⁸
					Flush	Mono-Flat		Al	Cu	
Convertible Mains — Factory-Installed Main Lugs, 65 kA Short Circuit Current Rating Convertible to QOM1 22 kA Short Circuit Current Rating Main Circuit Breaker when used with QOC cover below — Copper Bus										
125 A	12	24	12	QO112L125PWG	QOC20UFWG ³⁰	NQC20FWG ³⁰	PK15GTA	6–2/0		14
	20		4	QO120L125PWG						
Convertible Mains — Factory-Installed Main Lugs, 65 kA Short Circuit Current Rating Convertible to QOM2 22 kA Short Circuit Current Rating Main Circuit Breaker (See Indoor, QO Convertible Mains (125–225 A), 1Ø — Main Lugs, page 19) when used with QOC cover below — Copper Bus										
200 A	30	40	10	QO130L200PWG	QOC30UFWG ³⁰	NQC30FWG ³⁰	PK23GTA	4–300	4–250	23

27. Maximum single pole branch circuits utilizing QO and/or QOT (20 A MAX. NON-CTL.) circuit breakers.

28. See QO/Homeline Enclosure Dimensions and Knockout Information, page 67.

29. Maximum single pole branch circuits utilizing QO and/or QOT circuit breakers.

30. Available in gray and white colors. For white equivalencies add the “W” suffix to the reference or see QO Load Center Covers, page 43.

Indoor and Rainproof, QO Fixed and Convertible Mains (60–225 A), 3Ø — Main Lugs and Main Breaker

Table 21 - QO Standard Load Center Main Lugs and Main Breaker (3Ø4W–208Y/120 Vac, 3Ø4W–240/120 Vac Delta, and 3Ø3W–240 Vac Delta—Indoor and Rainproof—UL Listed)

	Mains Rating	Max. Number of 1P QO circuit breakers	Load Center Box and Interior	Indoor Cover with Door (Order Separately)		Main Wire Size AQG / kcmil		Equipment Ground Bar Kit (Order Separately)	Box No. ⁶²
			Cat. No.	Flush	Surface	Al	Cu		
Indoor	Fixed Mains — Factory-Installed Main Lugs — Copper Bus — 65 kA Short Circuit Current Rating ⁶³								
	60 A	3	QO403L60NF/S	Cover Included With Load Center (No Door)		12–6	14–6	PK4GTA	13
	125 A	12	QO312L125G ⁶⁴	QOC16UF	QOC16US	6–2/0	6–2/0	Factory- Included ⁶⁵	6
		20	QO320L125G ⁶⁴	QOC24UF	QOC24US				7
		24	QO324L125G ⁶⁴	QOC24UF	QOC24US				
	200 A	18	QO318L200G ⁶⁴	QOC30UF	QOC30US	4–250	4–250		9
		30	QO330L200G ⁶⁴	QOC30UF	QOC30US				
	225 A	42	QO342L225G ⁶⁴	QOC42UF	QOC42US	4–300	4–300		11
	Convertible Mains — Factory-Installed QDL Main Circuit Breaker — Copper Bus — 25 kA Short Circuit Current Rating ⁶⁶								
	100 A	27	QO327M100 ⁶⁷	QOC30UF	QOC30US	6–1	6–1	PK15GTA	9
	125 A	30	QO330MQ125 ^{68, 69}	QOC342MQF	QOC342MQS	4–250	4–250	PK18GTA	12
	150 A	30	QO330MQ150 ^{68, 69}	QOC342MQF	QOC342MQS			PK23GTA	
		42	QO342MQ150 ^{68, 69}	QOC342MQF	QOC342MQS				
	200 A	30	QO330MQ200 ^{68, 69}	QOC342MQF	QOC342MQS			PK18GTA	
		42	QO342MQ200 ^{68, 69}	QOC342MQF	QOC342MQS			PK23GTA	
	225 A	42	QO342MQ225 ^{68, 69}	QOC342MQF	QOC342MQS				

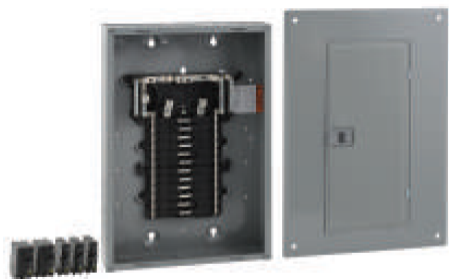
62. See QO/Homeline Enclosure Dimensions and Knockout Information, page 67.
 63. UL short circuit current rating depends on lowest interrupting of circuit breaker installed.
 64. For Certification to IEC 60439–1 contact the local Square D sales office; otherwise panels are NOT CE marked. (For use on 415Y/240 Vac 3-phase 4-wire, 3,000 Short Circuit Current Rating when QOXD branch circuit breakers are used and 10,000 Short Circuit Current Rating when QO vs. branch circuit breakers are used).
 65. PKGTALP1
 66. 25 kA short circuit current rating SCCR maximum with Square D Type QDL main circuit breaker, or 22 kA SCCR maximum with back-fed Type QO-VH main circuit breaker, feeding QO 10 k AIR branch circuit.
 67. Includes factory-installed back fed QO3100VH main circuit breaker.
 68. 65 kA Short Circuit Current Rating maximum with field-installed Square D type QGL 65 k AIR minimum main circuit breaker feeding QO and Q1 10 k AIR minimum branch circuit breakers.
 69. For Certification to IEC 60439–1 contact the local Square D sales office; otherwise panels are NOT CE marked. (For use on 415Y/240 Vac 3-phase 4-wire, 3,000 Short Circuit Current Rating when QOXD... branch circuit breakers are used and 10,000 Short Circuit Current Rating when QO...VS branch circuit breakers are used).

Table 21 - QO Standard Load Center Main Lugs and Main Breaker (3Ø4W–208Y/120 Vac, 3Ø4W–240/120 Vac Delta, and 3Ø3W–240 Vac Delta—Indoor and Rainproof—UL Listed) (Continued)

Mains Rating	Max. Number of 1P QO circuit breakers	Load Center Box and Interior Cat. No.	Indoor Cover with Door (Order Separately)		Main Wire Size AQQ / kcmil		Equipment Ground Bar Kit (Order Separately)	Box No. 70			
			Flush	Surface	Al	Cu					
Rainproof	Fixed Mains — Factory-Installed Main Lugs — Copper Bus — 65 kA Short Circuit Current Rating ^{71, 72}										
	60 A	3	QO403L60NRB	Cover Included		12–6	14–6	PK4GTA	10R		
	125 A	12	QO312L125GRB			6–2/0	6–2/0	Factory-Included ⁷³	3R		
		20	QO320L125GRB						4R		
	200 A	18	QO318L200GRB					4–250	4–250	Factory-Included ⁷⁴	6R
		30	QO330L200GRB					4–300	4–300		8R
	225 A	42	QO342L225GRB								
	Convertible Mains — Factory-Installed QDL Main Circuit Breaker — Copper Bus — 25 kA Short Circuit Current Rating ^{75, 72}										
	100 A	27	QO327M100RB ⁷⁶	Cover Included		4–2/0	4–2/0	PK15GTA	6R		
	125 A	30	QO330MQ125RB ⁷⁷					4–250	4–250	PK18GTA	14R
	150 A		QO330MQ150RB ⁷⁷								
	200 A		QO330MQ200RB ⁷⁷								
	225 A	42	QO342MQ200RB ⁷⁷							PK23GTA	
			QO342MQ225RB ⁷⁷								

70. See QO/Homeline Enclosure Dimensions and Knockout Information, page 67.
 71. UL short circuit current rating depends on lowest interrupting rating of circuit breaker installed.
 72. Side hinge door device allow 1–1/4 in. on left side for door to open.
 73. PKGTALP1
 74. PKGTALP2
 75. 25 kA short circuit current rating SSCR maximum with Square D Type QDL main circuit breaker, or 22 kA SCCR maximum with back-fed Type QO-VH main circuit breaker feeding QO 19 k AIR branch circuit.
 76. Includes factory-installed back fed QO3100VH main circuit breaker.
 77. 65 kA Short Circuit Current Rating maximum with field-installed Square D type QGL 65 k AIR minimum main circuit breaker feeding QO and Q1 10 k AIR minimum branch circuit breakers.

Plug-on Neutral Load Center Value Packs



QO124L125PGCVP



QO142M200PCAFVP

Table 26 - Plug-on Neutral Indoor Load Center Value Packs (Compatible with Plug-on Circuit Breakers and Plug-on Neutral Circuit Breakers)

Mains Rating	Spaces	Max. 1P Circuits ⁸⁴	Max. Tandem Circuit Breakers	Load Center Box, Interior, Cover and Branch Circuit Breakers		Equipment Ground Bar Kit (Order Separately)	Main Wire Size AWG/kcmil		Box No. ⁸⁵
				Cat. No.	Included Load Center/Circuit Breakers	Cat. No.	Al	Cu	
QO (Accepts Only QO Plug-On Circuit Breakers) QO — Copper Bus; Convertible Mains — Factory-Installed Main Circuit Breaker, 22 kA Short Circuit Current Rating Convertible appropriate to Main Lugs or QOM Main Circuit Breaker									
125 A	24	34	10	QO124L125PGCVP	(1) QO124L125PGC (3) QO120 (2) QO230	PKGTALP1 Included	6-2/0		7
225 A	42	52		QO142L225PGCVP	(1) QO142L225PGC (3) QO120 (2) QO230	PKGTALP2 Included	4-300		11
Convertible Mains — Factory-Installed Main Circuit Breaker, 22 kA Short Circuit Current Rating Convertible appropriate to Main Lugs or Main Circuit Breaker									
100 A	24	34	10	QO124M100PCVP	(1) QO124M100PC (3) QO120 (2) QO230	PK15GTA	6-2/0		7
	32	38	6	QO132M100PCVP	(1) QO132M100PC (3) QO120 (2) QO230	PK18GTA			8
200 A	42	52	10	QO142M200PCVP	(1) QO142M200PC (3) QO120 (2) QO230	PK23GTA	4-300		11
				QO142M200PCAFVP	(1) QO142M200PC (3) QO120 (2) QO230 (3) QO115PCAFI				

84. Maximum single pole branch circuits utilizing QO and/or QOT (20 A MAX. NON-CTL) circuit breakers.

85. See QO/Homeline Enclosure Dimensions and Knockout Information, page 67.

Table 47 - Plug-on Neutral with Qwik-Grip Indoor Load Center Value Packs — (compatible with Plug-on Circuit Breakers and Plug-on Neutral Circuit Breakers) (Continued)

Mains Rating	Spaces	Max. 1P Circuits	Max. Tandem Circuit Breakers	Load Center Box, Interior, Cover and Branch Circuit Breakers		Equipment Ground Bar Kit (Order Separately)	Main Wire Size AWG/kcmil		Box No. 121
				Cat. No.	Included Load Center/Circuit Breakers		Cat. No.	Al	
200 A	40	80	40	HOM4080M200PQCV	(1) HOM4080M200PQC (2) HOM120 (1) HOM230 and (1) PKQGA Qwik-Grip assembly kit		4-250		12Q

Table 48 - Plug-on Neutral Rainproof Load Center Value Packs (compatible with Plug-on Circuit Breakers and Plug-on Neutral Circuit Breakers)

Mains Rating	Spaces	Max. 1P Circuits	Max. Tandem Circuit Breakers	Load Center Box, Interior, Cover and Branch Circuit Breakers		Equipment Ground Bar Kit (Order Separately)	Main Wire Size AWG/kcmil		Box No. 121
				Cat. No.	Included Load Center/Circuit Breakers		Cat. No.	Al	
Homeline (Accepts Only HOM Plug-On Circuit Breakers) Convertible Mains—Factory-Installed Main Circuit Breaker, 22 kA Short Circuit Current Rating Convertible to Main Lugs or Lower Amperage QOM2 Main Circuit Breaker									
125 A	12	24	12	HOM1224M125PRBVP	(1) HOM1224M125PRB (3) HOM120 (2) HOM230	PK9-27GTA(L)	6-2/0	6-1	3R
200 A	30	60	30	HOM3060M200PRBVP	(1) HOM3060M200PRB (3) HOM120 (2) HOM230		4-250		7R

Table 49 - Plug-on Neutral Load Center Value Packs with Surge Protective Device (compatible with Plug-on Circuit Breakers and Plug-on Neutral Circuit Breakers)

Mains Rating	Spaces	Max. 1P Circuits	Max. Tandem Circuit Breakers	Load Center Box, Interior, Cover and Branch Circuit Breakers		Equipment Ground Bars	Main Wire Size AWG/kcmil		Box No.
				Cat. No.	Included Load Center/Circuit Breakers/SPD		Cat. No.	Al	
225 A	30	60	30	HOM3060L225PGCSVP2	(1) HOM3060I225PGC (1) HOM230 (2) HOM120, (1) Plug-on Neutral HOM250PSPD, Cover and Ground Bar	PKGTALP2 Included	4-300	4-250	10
200 A	8	16	8	HOM816M200PFTRBSP2	(1) HOM816M200PFTRB (1) Plug-on Neutral HOM250PSPD	PK15GTA (Order Separately)	4-250		6R

121. See QO/Homeline Enclosure Dimensions and Knockout Information, page 67.

Table 71 - Manual Transfer Equipment Kit



QO2DTI



QODTIM



PK4DTIM4LA



PK4DTIM4LAL



PK7GTA



PK12GTA



PK15GTA6



PKG7GTA
PK9GTA



PK15GTAL
PK18GTAL



PKG23GTAL
PKGTAB

(Manual transfer equipment kits secure two 2-pole, 10-125 A circuit breakers.)		
Load Center	Load Center	Usage Information
QO	QO2DTI	For interlocking the handles of two 2P or one 2P and one 1P QO and Q1 circuit breakers mounted side-by-side so that only one circuit breaker can be ON at a time.
	QODTIM	QO2DTI mechanical interlock attachment with retaining kits for securing two adjacent back-fed circuit breakers in dual power supply applications. Can be used with (2) 2P or (1) 2P and (1) 1P QO circuit breakers in QO816L100 load centers.
	PK4DTIM4LA	Secures two 2P circuit breakers to right side of interior when used as back-fed mains, a QO2DTI Kit included for back-up power supply applications. For 1Ø 100–125 ampere convertible main load centers. Series S01 and S02.
	PK4DTIM4LAL	Secures two 2P circuit breakers to left side of interior when used as back-fed mains, a QO2DTI Kit included for back-up power supply applications. For 1Ø 100–125 ampere convertible main load centers. Series S01 and S02.

Table 72 - Ground Bar Kits

(Field-installable in all load centers. Same wire size as neutral terminals. Suitable for copper or aluminum wire)		
Load Center	Load Center	Usage Information
QO and Homeline	PK3GTA1	Ground Bar Assembly—3 connectors
	PK4GTA	Ground Bar Assembly—4 connectors
	PK5GTA	Ground Bar Assembly—5 connectors
	PK7GTA	Ground Bar Assembly—7 connectors
	PK9GTA	Ground Bar Assembly—9 connectors
QO	PK12GTA	Ground Bar Assembly—12 connectors
QO and Homeline	PK15GTA	Ground Bar Assembly—15 connectors
	PK18GTA	Ground Bar Assembly—18 connectors
	PK23GTA	Ground Bar Assembly—23 connectors
	PK27GTA	Ground Bar Assembly—27 connectors
QO	PK15GTA6	Ground Bar Assembly—21 connectors. Use in high amperage load centers
	PK15GTAL	Standard PK15GTA with a 1–4/0 Al/Cu Lug
QO and Homeline	PK18GTAL	Standard PK18GTA with a 1–4/0 Al/Cu Lug
QO	PK23GTAL	Standard PK23GTA with a 1–4/0 Al/Cu Lug
QO and Homeline	PKG7GTA	Ground Bar Pack— PK9GTA, PK9GTA, and LK100AN
	PKG18GTA	Ground Bar Pack— PK9GTA, PK18GTA, and LK100AN
	PKG15GTA	Ground Bar Pack—PK15GTA, PK18GTA, and LK100AN
	PKGTAB	Insulator Kit for PK7GTA through PK27GTA



Table 73 - Ground Bar Kits

(All PK equipment grounding kits are supplied with mounting screws, necessary installation instructions, and an equipment grounding terminal self-adhesive label.)												
Catalog No.	Total Qty.	Terminals						Approximate Overall Length		Distance Between Mounting Holes		Mounting
		Quantity Each Size (See Wiring Range , page 77)										
		I	II	III	IV	V	VI	in.	mm	in.	mm	
PK3GTA1	3	3	—	—	—	—	—	1.38	35	One hole	One hole	Top
PK4GTA	4	4	—	—	—	—	—	1.63	41	One hole	One hole	Top
PK5GTA	5	5	—	—	—	—	—	2.25	57	1.25	32	Top
PK7GTA	7	7	—	—	—	—	—	2.88	73	1.25	32	Top or Side
PK9GTA	9	9	—	—	—	—	—	3.78	96	3.13	80	Top
PK12GTA	12	12	—	—	—	—	—	4.7	119	3.13	80	Top
PK15GTA	15	15	—	—	—	—	—	5.63	143	3.13	80	Top
PK15GTAL	16	15	1	—	—	—	—	8.13	207	3.13	80	Top
PK15GTA6	21	15	—	—	6	—	—	5.88	149	124	124	Top
PK18GTA	18	18	—	—	—	—	—	8.13	167	3.13	80	Top
PK18GTAL	19	18	1	—	—	—	—	5.88	224	3.13	80	Top
PK23GTA	23	23	—	—	—	—	—	6.56	206	3.13	80	Top
PK23GTAL	24	23	1	—	—	—	—	8.81	240	3.13	80	Top
PK27GTA ¹²⁵	27 or 26	27 or 26	—	1	—	—	—	8.11	238	3.13	80	Top

Table 74 - Wiring Range

Size	Cu (AWG)	Al (AWG)
I	(1) #14 – # 4 or (2) #14 or #12	(1) #12 – #4 or (2) #12 or #10
II	(1) #1 – 4/ 0	(1) #1 – 4/0
III	(1) #6 – 2/ 0	(1) #6 – 2/0
IV	(1) #6 – 3/0	(1) #6 – 3/0
V	(1) #14 – 1/0	(1) #14 – 1/0
VI	(1) #10 – 2/0	(1) #6 – 2/0

124. 3.13 in. (80 mm) on small terminals; 5.25 in. (133 mm) on large terminals.

125. PK27GTA includes one main grounding lug that mounts with two terminal screws and requires three terminals for mounting.